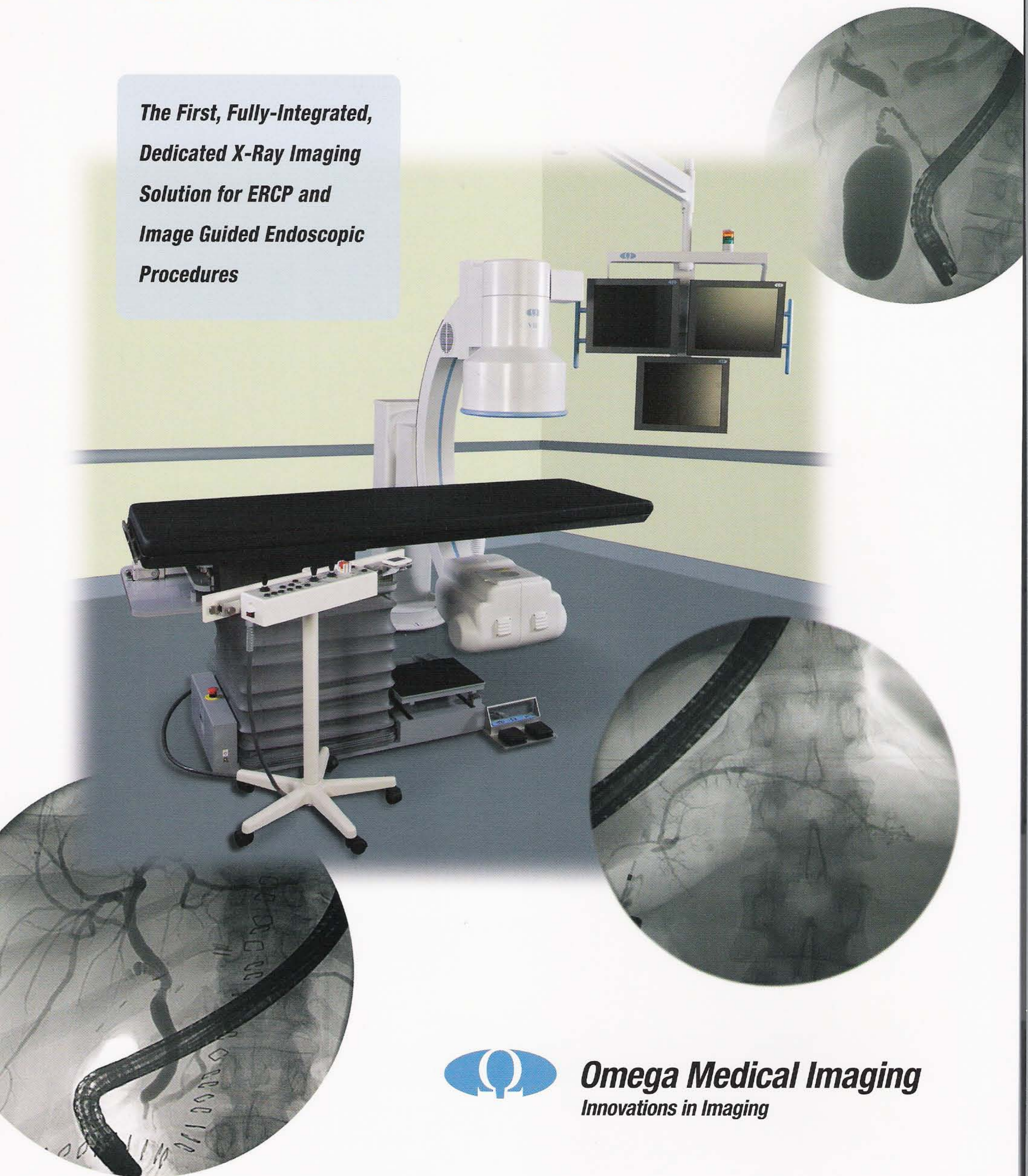


e-VIEW™ *A New Vision in ERCP Guidance*

***The First, Fully-Integrated,
Dedicated X-Ray Imaging
Solution for ERCP and
Image Guided Endoscopic
Procedures***



Omega Medical Imaging
Innovations in Imaging

Superior Design • Dedicated Configuration • Outstanding Results

e-VIEW

Rather than modifying an existing imaging platform, such as a mobile C-arm, Omega has developed a completely new system concept, optimized specifically for guidance in ERCP and GI procedures. The result is “best in class” performance in a completely integrated solution.



A Fully Integrated Solution

The *e*-VIEW is a complete system including patient table, imaging system, image processor and display module. All aspects are fully integrated to provide clinical results and financial value.



- Unique configuration streamlines patient handling and improves procedural throughput
- “Open” design provides unparalleled patient access for the entire clinical team.
- Superior imaging, in all aspects, allows faster, easier procedures
- Safety you can trust with low dose X-Ray and improved operator protection
- Seamless integration with Hospital Information Systems (DICOM)
- Outstanding quality and reliability for reduced total cost of ownership

e-VIEW Superior Imaging Performance with Improved Clinical Results

Largest field of view – 14 inch

- Provides visualization of greater anatomical area, especially important in large patients
- 11" and 9" Mag modes allow zooming for the finest detail

Industry leading power

- 50 kW, High Frequency, generator provides higher power to penetrate even the largest of patients
- Reduced exposure times eliminating blurring artifacts
- 600 kHu, high-speed x-ray tube with 4" rotating anode and fast cooling feature

All digital, high resolution-imaging platform

- High-resolution 1024 x 1024 x 12 bit Digital CCD camera
- Automatic image optimization with edge-enhancement and noise reduction
- Flexibility of Fluoro, Fluoro Loop and Digital Spot Imaging
- Pulsed fluoro range – 3.75 to 30 pps

Large diameter, motor driven, C-Arm with multi-plane motions

- Large C-arm diameter provides improved imaging geometry
- Precision motorized motions speed positioning and procedures
- Independent table and C-arm motions for flexibility in imaging projections, avoiding superimposition of objects and structures

Intuitive tableside controls fast, easy system motions

- Eliminates the requirement for dedicated personnel for C-arm positioning
- Single control panel for all C-arm and table motions

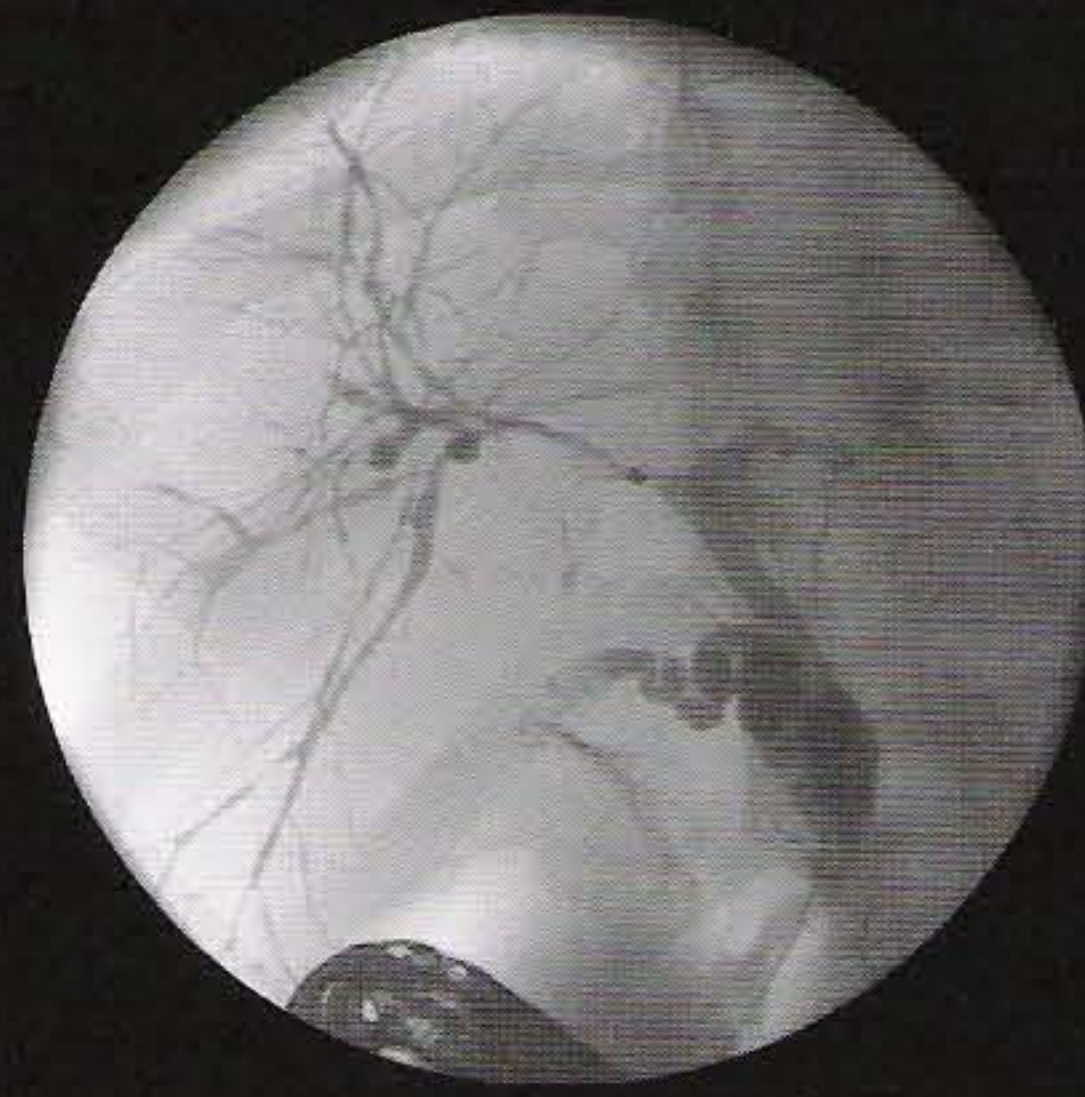
High-capacity, all motorized table

- 5 motorized table motions –vertical, horizontal, lateral, tilt and cradle roll
- Cradle roll motion enhances filling and draining of ducts
- Simultaneous motions for quicker patient positioning
- 500 lb. patient-rated

Typical Case Studies

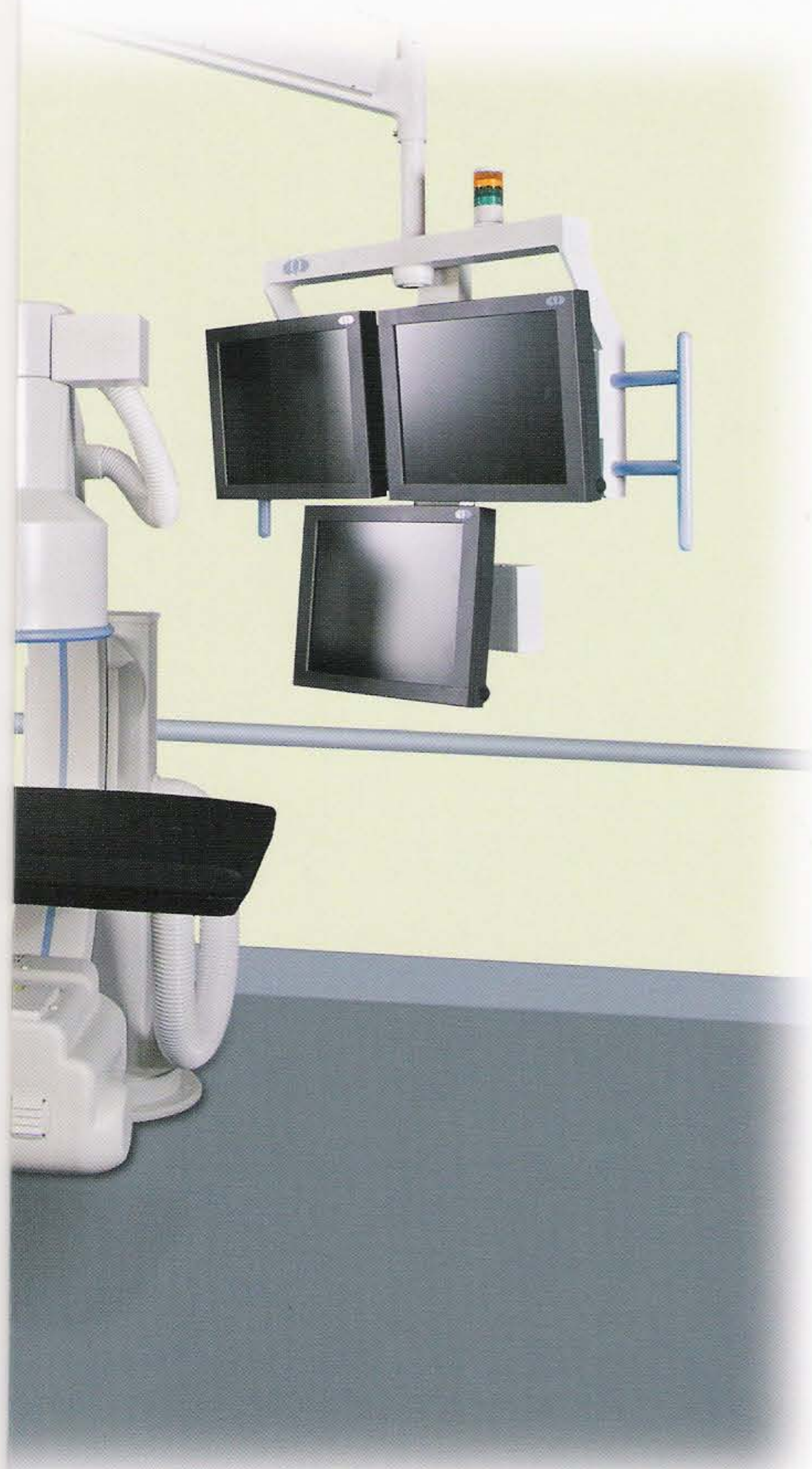


Cystic duct superimposed



Cystic duct visualized with slight C-Arm angle





Flexibility and Connectivity

- Integrated CD burner with viewer
- Seamless integration with Hospital Information System (DICOM)
- Integrated "on-screen" measurement software
- On-board 80 GB storage – 15,000 Digital Spot images

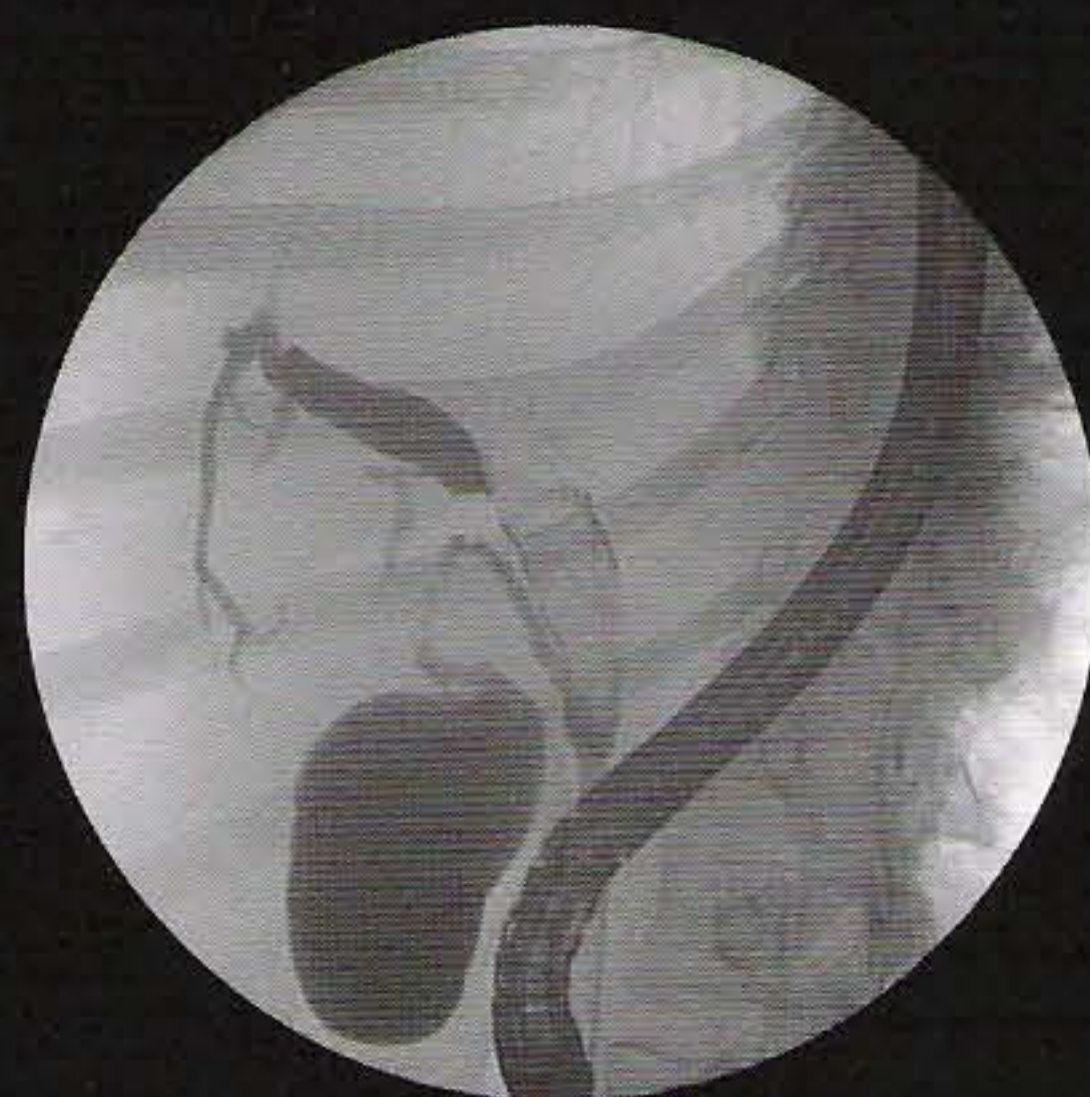


Removable Lead Shielding

- Covers Image Intensifier and X-Ray Tube Assembly
- Eliminates virtually all patient scatter to operating staff

Configured for easier patient handling and higher patient throughput

- Manually operated C-arm allows unobstructed access to the entire patient
- Pivoting Image Assembly provides 360° access around patient table to facilitate easy patient transfer



*Liver mass producing
mucous clot in CBD*



*Liver transplant
Patient with "on-screen"
measurements*

Comparative Specifications

e-VIEW

Conventional Mobile C-Arms

Generator

| | | |
|--|-------------------|---------------|
| kW Output | 50 kW | 15 kW - 20 kW |
| Max kV Radiographic | 150 kV | 120 kV |
| Max mA Radiographic | 630 mA | 75 mA |
| Max kV Fluoroscopic | 125 kV | 120 kV |
| Max mA Fluoroscopic (pulsed) | 75 mA | 20 mA |
| Pulsed Fluoroscopy rates (pulses per second) | 3.75, 7.5, 15, 30 | 1, 2, 4, 8 |

X-Ray Tube

| | | |
|--------------------------------|---------------|---|
| Anode type | Rotating | Rotating or stationary |
| Anode speed/diameter | High speed/4" | Standard speed/3" |
| Heat unit rating | 600 kHU | 50 kHu – 300 kHU |
| Focal spot sizes | 0.3mm - 0.8mm | 03.mm – 0.8mm |
| Heat dissipation rate, kHU/min | 29 kHU/Min | 15 kHU stationary anode – 70 kHU rotating anode |

Collimator

| | | |
|--------------------------------|-----|-----|
| Auto-collimation to field size | Yes | Yes |
| Auto-collimation to SID | Yes | N/A |

C-Arm Positioner

| | | |
|-------------------------------------|-------------------|----------|
| Motorized CC and RAO/LAO angulation | Yes | Optional |
| Table side motorized control module | Yes | Optional |
| Rotational floor mount | Yes, + 90 degrees | No |
| Motorized variable SID | Yes | No |
| SID range | 33.5" to 43.5" | Fixed |

Tilting/Elevating Table

| | Included | Not Included |
|-------------------------|-----------|--------------|
| 500 pound patient rated | Yes | |
| Table top dimensions | 27" x 84" | |
| 5 motorized motions | Yes | |
| Custom lead table drape | Yes | No |

Digital Imaging Chain

| | | |
|--------------------------------------|--------------|---------------------------|
| Field of View/Image Intensifier size | 14" standard | 9" standard, 12" optional |
| Image Intensifier mag modes | 11"/9" | 6"/4.5" |
| Advanced 1K2 CCD | Yes | Yes |

Connectivity and Storage

| | | |
|--------------------------------|-------|----------|
| Hard drive Storage size | 80 GB | 5 GB |
| CD Burner with embedded viewer | Yes | Optional |
| DICOM 3.0 | Yes | Optional |

Digital Imaging Processor

| | | |
|--|-----|----------|
| 1024 ² x 12 bit high resolution Digital R/F Package | Yes | Yes |
| Real-time 5 level edge enhancement | Yes | Optional |
| Real-time Auto Image Optimization | Yes | Optional |
| 9 level fluoro noise reduction | Yes | Optional |

Ceiling Suspension Display

| | | |
|--|-----|-----|
| Articulating arm for positioning flexibility | Yes | No |
| Custom suspension for 3 monitors | Yes | No |
| Includes 2 high resolution, flat panel, 18.1" monitors | Yes | Yes |

Specifications subject to change.