



myrian™ XP-Colon

“The power of virtual colonoscopy natively integrated to the diagnostic workstation with seamless CAD integration.”

Myrian™ XP-Colon puts virtual colonoscopy within everybody's reach. Its unique automatic segmentation and endoscopy rendering technologies make it simple to navigate inside the colon and search for polyps. A virtual camera probe is used to seek out candidate lesions whilst 2D MPR viewports provide all the complementary anatomical information required for their characterization. The adjustably transparent DCBE view charts the exact position of lesions in 3D at all times, whilst the unfolded fliet view completes the examination. Myrian™ XP-Colon automatically measures the volume and maximum size of each polyp, keeping track of its precise coordinates. Seamlessly built-in to the Myrian™ Expert VL workstation, the module helps to examine the anatomical and pathological environment of each lesion and validate your diagnosis without losing one critical second of time. The integrated report generation, the scrapbook and the ability to export to a PACS or removable media improve interdepartmental communication. The optional seamless integration of CAD results (not available in the USA) further enhances the sensitivity of your interpretation.



Prof. Yves GANDON

Rennes University Hospital (France)

«Myrian™ XP-Colon allows me to successfully perform colonoscopy using my Myrian™ Expert VL workstation, in which it sits perfectly and seamlessly. Thanks to the smooth, top quality endoscopy reconstruction, we achieve excellent results in our polyp search, whilst the characterization tools confirm our analysis.»

Display protocols

Prone, supine, DCBE, endoscopy, file views: studies are automatically recognised and displayed according to the most suitable protocols in a workspace that can be adapted to your needs

Management of findings

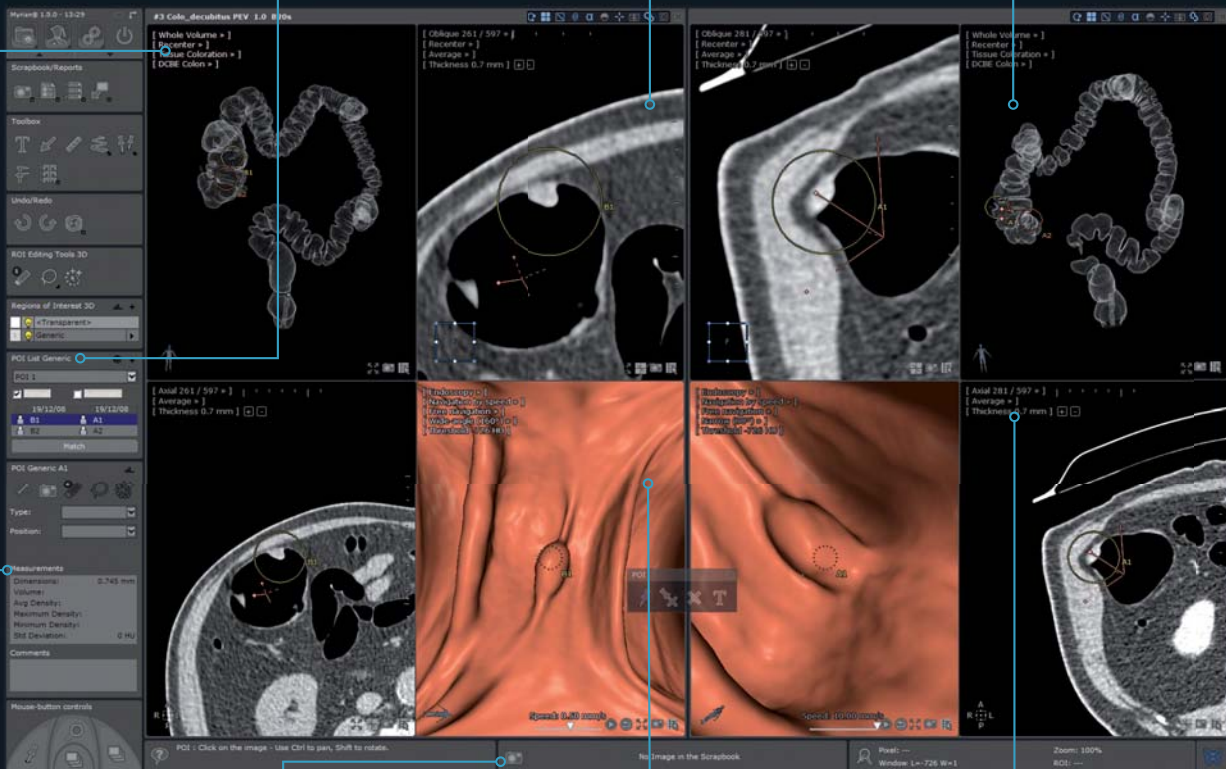
Mark each polyp as a point of interest (POI) and measure it instantly. Then navigate from lesion to lesion using the automatically sorted POI list

Matching of prone and supine views

Confirm candidate lesions by matching prone and supine views

DCBE view

Visualise and locate candidate lesions within the colon



CAD option

(not available in the USA)

With the fully integrated optional CAD option you can obtain all CAD findings at once in the POI management screen

Integrated reports

Generate comprehensive reports in one click listing findings in tables which include their snapshots, then push them to PACS in DICOM format

Virtual colonoscopy

Operate the virtual endoscope using the mouse. Variable focal lens angle (up to 160°), forward/reverse navigation and free rotation help to carry out the examination

Filet view

The unfolded view of the colon completes the search for polyps

Tools

- Automatic computation of the virtual endoscopic path
- Variable angle width of the camera probe with free rotation and reverse navigation
- Dedicated viewports: endoscopy, DCBE colon, filet, 3D zoom-in on a polyp
- Filet view
- Prone/supine matching with POI manager
- Automatic polyp segmentation
- Automatic feature extraction
- Dedicated report builder
- Optional MedicSight ColonCAD™ add-on module (ref: MDST-ColonCAD) with concurrent or peripheral reading mode possibility

Compatibility

- Runs on Windows® XP, Windows Vista®, Windows 7™



Compatibility

Myrian™ ExpertVL

Optional add-on modules (depending on country - not available in the USA)

MDST-ColonCAD™ - award-winning CAD module by MedicSight as a concurrent or secondary reader (not available in the USA)

	Processor	RAM	Screen Resolution	Graphics Cards	Operating System
Minimal configuration	Intel® Pentium® 4™ or AMD® Athlon® 64™	2 GB	1024x768	nVIDIA™ GeForce™ 7800 GTX	Microsoft® Windows® XP Pro SP3 or Windows® Vista Business SP2 32 bits
Recommended configuration	Intel® Core™ 2 Quad or Duo	4 GB	2 MP monitors	nVIDIA™ GeForce™ 8800 GT 512 Mb and GTX260 896 Mb ATI Radeon™ HD 4890 1024 Mb	Microsoft® Windows® XP Pro SP3 or Windows® Vista Business SP2 32 bits

